

LoDo Towers

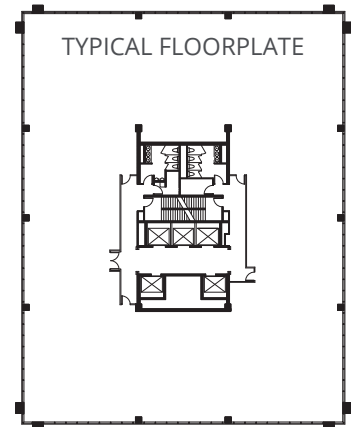
1331 17th Street



lodotowers.com

**LoDo's Only
High-Rise Towers**
offering outstanding
western views

- 13 Stories
- 224,683 SF
- 17,386 SF floorplates



- Best parking ratio Downtown - 2.0/1,000 SF
- Secure bike storage with repair station
- Full service bank and sandwich shop on-site
- Access new 10,000 SF Amenity Center
- 9' ceilings



Bradley Jacobs | 469.250.7845

cimgroup.com



Newmark
Knight Frank

Jamie Gard | 303.260.4341
Jeff Castleton | 303.260.4391
Tom Crosby | 303.260.4443

ngkf.com

LoDo Towers

1331 17th Street

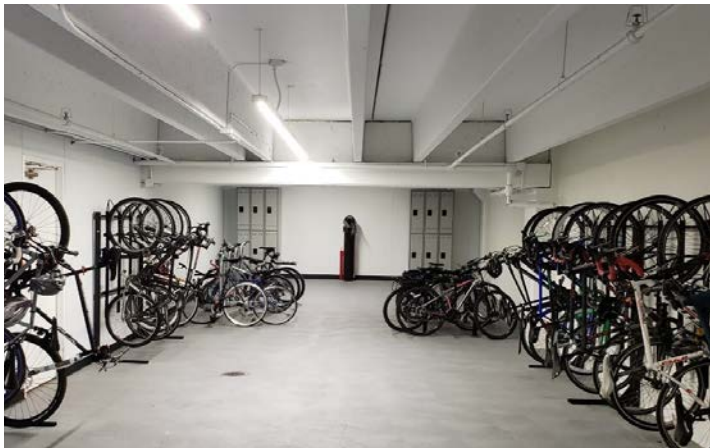
New Exciting Improvements
and 10,000 SF Amenity Center



Contemporary Lobby



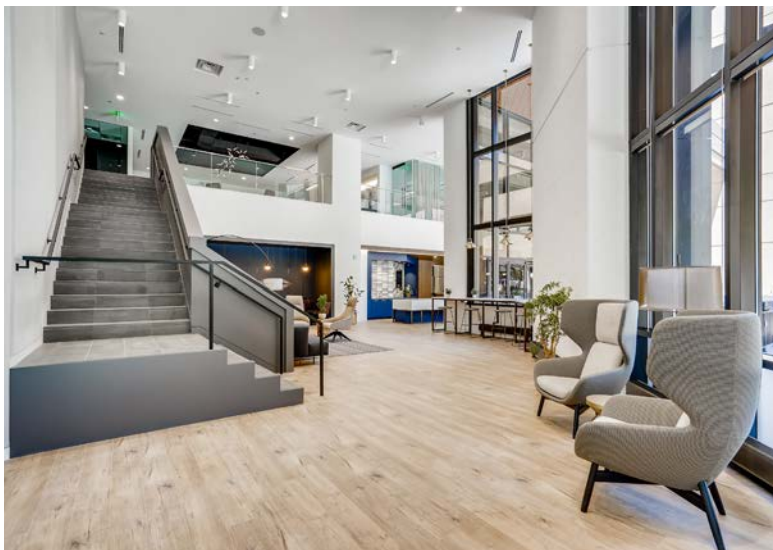
Upgraded Building Entry



Bike Storage



In-Building Conference Room



Project Amenity Center



Generous Attached Parking Garage



A CIM Operated Property
CIM is a community-focused real estate and infrastructure owner,
operator and lender. Leasing information: www.cimgroup.com

CIM Group is not affiliated or associated with, is not endorsed by, does not endorse, and is not sponsored by or a sponsor of the tenants or of its products or services pictured or mentioned on this web site. The names, logos and all related product and service names, design marks and slogans are the trademarks or service marks of their respective companies.